

**REGIONAL SPECIALISED METEOROLOGICAL CENTRE-TROPICAL CYCLONES, NEW DELHI
TROPICAL WEATHER OUTLOOK**

DEMS-RSMC TROPICAL CYCLONES NEW DELHI DATED 15.09.2020

TROPICAL WEATHER OUTLOOK FOR NORTH INDIAN OCEAN (THE BAY OF BENGAL AND ARABIAN SEA) VALID FOR NEXT 120 HOURS ISSUED AT 0630 UTC OF 15.09.2020 BASED ON 0300 UTC OF 15.09.2020. (MODIFIED)

BAY OF BENGAL:

YESTERDAY'S WELL MARKED LOW PRESSURE AREA OVER WESTCENTRAL BAY OF BENGAL (BOB) AND ADJOINING NORTH ANDHRA PRADESH COAST LAY AS A LOW PRESSURE AREA OVER THE SAME REGION. SCATTERED LOW AND MEDIUM CLOUDS WITH EMBEDDED MODERATE TO INTENSE CONVECTION LAY OVER WESTCENTRAL BOB, NORTH COASTAL ANDHRA PRADESH AND NEIGHBORHOOD IN ASSOCIATION WITH THE LOW PRESSURE AREA.

SCATTERED LOW AND MEDIUM CLOUDS WITH EMBEDDED INTENSE TO VERY INTENSE CONVECTION LAY OVER EXTREME NORTHEAST AND WESTCENTRAL & ADJOINING SOUTH BOB. SCATTERED LOW AND MEDIUM CLOUDS WITH EMBEDDED MODERATE TO INTENSE CONVECTION LAY OVER EASTCENTRAL BOB, ANDAMAN SEA AND TENASSERIM COAST.

PROBABILITY OF CYCLOGENESIS DURING NEXT 120 HRS:

24 HOURS	24-48 HOURS	48-72 HOURS	72-96 HOURS	96-120 HOURS
NIL	NIL	NIL	NIL	NIL

ARABIAN SEA:

SCATTERED LOW AND MEDIUM CLOUDS WITH EMBEDDED INTENSE TO VERY INTENSE CONVECTION LAY OVER NORTH ARABIAN SEA. SCATTERED LOW AND MEDIUM CLOUDS WITH EMBEDDED MODERATE TO INTENSE CONVECTION LAY OVER EASTCENTRAL ARABIAN SEA. SCATTERED LOW AND MODERATE CLOUDS WITH EMBEDDED WEAK TO MODERATE CONVECTION LAY OVER REST ARABIAN SEA.

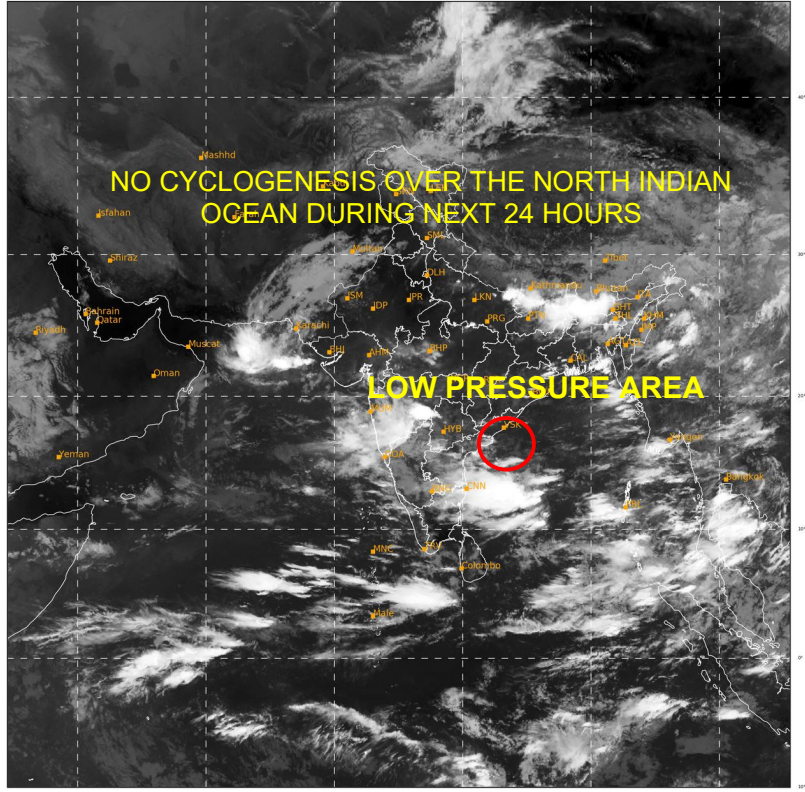
PROBABILITY OF CYCLOGENESIS DURING NEXT 120 HRS:

24 HOURS	24-48 HOURS	48-72 HOURS	72-96 HOURS	96-120 HOURS
NIL	NIL	NIL	NIL	NIL

REMARKS: NIL

PROBABILITY OF CYCLOGENESIS (FORMATION OF DEPRESSION):NIL: 0%, LOW: 1-25%, FAIR: 26-50%, MODERATE: 51-75% AND HIGH: 76-100%

Disclaimer: This is a guidance Bulletin for WMO/ESCAP Panel Member countries. Please visit respective National websites for country specific bulletins.



430 928 IMD, DELHI

PROBABILITY OF CYCLOGENESIS (FORMATION OF DEPRESSION):NIL: 0%, LOW: 1-25%, FAIR: 26-50%, MODERATE: 51-75% AND HIGH: 76-100%

Disclaimer: This is a guidance Bulletin for WMO/ESCAP Panel Member countries. Please visit respective National websites for country specific bulletins.